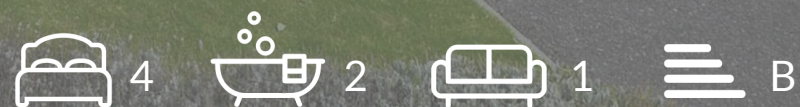




OAKFIELD



Millennium Way, Heathfield  
Asking Price £450,000





# SUMMARY

---

Offering far more space than first meets the eye, this beautifully maintained home is perfect for growing families.

It enjoys pleasant rear views and features a modern open-plan kitchen, dining, and living area with French doors leading directly to the garden—ideal for both everyday living and entertaining.

The kitchen includes some integrated appliances, and a separate utility room adds convenience. Upstairs, the accommodation comprises four generously sized double bedrooms, including a large principal bedroom with a private en-suite bathroom.

The rear garden is a standout feature—well maintained and of a good size, it includes a raised decked area perfect for outdoor dining and relaxing, with the remainder laid to lawn.

A lower-level section provides a dedicated space ideal for growing vegetables or creating a kitchen garden.

To the front, there's a single garage and a driveway offering additional off-street parking.



The property also benefits from direct access to the nearby Millennium Wood and is within easy walking distance of Heathfield High Street.





## Kitchen/Dining/Sitting Room

28'10 x 19'8

## Bedroom

15'7 x 11'2

## Bedroom

14'11 x 10'2

## Bedroom

13'7 x 7'5

## Bedroom

11'1 x 9'10

## Garage

20'0 x 9'11

Council Tax Band - E



























# INFORMATION

---

## Tenure

Freehold

## Local Authority

Wealden District Council

## Council Tax Band

E

## Opening Hours

Monday to Friday	9.00am - 5.30pm
Saturday	9.00am - 4.00pm

## Viewings

Please contact us on 01435 864233 if you wish to arrange a viewing appointment for this property or require further information.

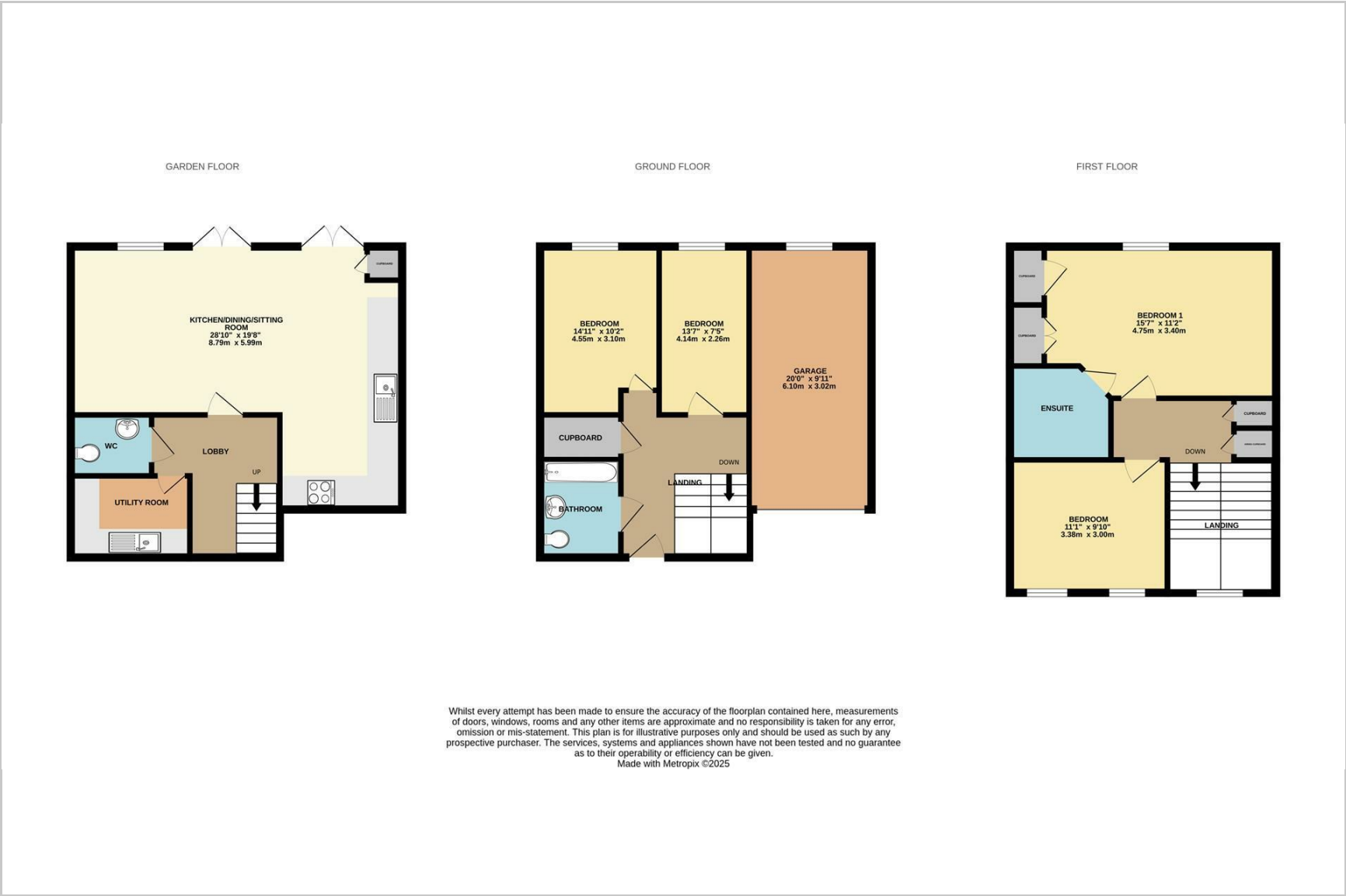
## Area Map





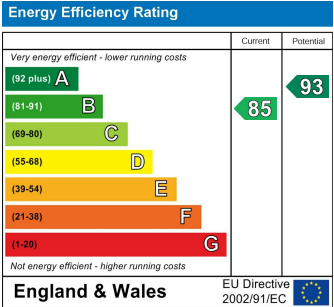
Floorplan

Energy Efficiency Graph



Whilst every attempt has been made to ensure the accuracy of the floorplan contained here, measurements of doors, windows, rooms and any other items are approximate and no responsibility is taken for any error, omission or mis-statement. This plan is for illustrative purposes only and should be used as such by any prospective purchaser. The services, systems and appliances shown have not been tested and no guarantee as to their operability or efficiency can be given.

Made with Metropix ©2025



These particulars, whilst believed to be accurate are set out as a general outline only for guidance and do not constitute any part of an offer or contract. Intending purchasers should not rely on them as statements of representation of fact, but must satisfy themselves by inspection or otherwise as to their accuracy. No person in this firms employment has the authority to make or give any representation or warranty in respect of the property.